

Miyav Learning brings out various educational aids to help children solve practical problems creatively. We brings out activity books, educational games and puzzles books to stimulate curiosity of the children to find their passion in particular professions and pursue them with self motivation.

Children can logon to www.miyav.in to find various resources, create projects and share with their friends.

Thinking Tools for Creative Kids



visit www.miyav.in to get it delivered at your home

Designed & Created by Miyav Learning, India



Maths Worksheets by Miyav Learning is licensed under a Creative Commons Attribution-NonCommercial-Share Alike 3.0 Unported License.

This free printable worksheets distributed to individuals for non-commercial use only.

Exercise 1

A weight = 5 kg



B weight = 60 kg



C weight = 300 g



D weight = 100 g



In which of the following pictures weight is mentioned incorrect?

- A & B
- C & B
- B & D
- C & A

List down the household items , which falls in the specified range?

weight - 50 Kg to 100Kg

1 _____ 2 _____ 3 _____ 4 _____

weight - 5 Kg to 10 Kg

1 _____ 2 _____ 3 _____ 4 _____

weight - 100 g to 1 Kg

1 _____ 2 _____ 3 _____ 4 _____

Miyav Learning brings out unique activity books, educational games and educational aids to kids to solve practical problems creatively. This free printable maths worksheets are designed to introduce mathematics in a practical way by connecting with day to day objects. You can carry out your own maths worksheets by extending the concepts here.

Exercise 2

A

bike length = 400cm



B

monitor width = 0.3 m



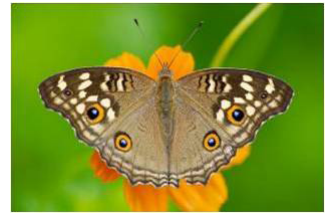
C

bridge length = 1200 m

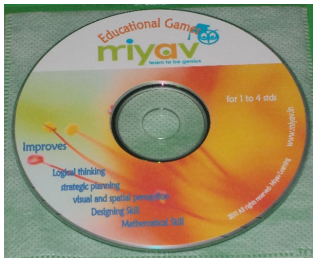


D

butterfly width = 50cm



Miyav Educational Games



visit www.miyav.in to get it delivered at your home

Designed and Created by Miyav Learning, India



Maths worksheets by Miyav Learning is licensed under a Creative Commons Attribution-NonCommercial-Share Alike 3.0 Unported License.

This free printable worksheets distributed to individuals for non-commercial use only.

In which of the following pictures length/width mentioned is correct?

- A & B
- C & B
- B & D
- C & A

List down the household objects, which falls in the specified range.

length - 10 cm to 100cm

1 _____ 2 _____ 3 _____ 4 _____

height - 1 m to 5 m

1 _____ 2 _____ 3 _____ 4 _____

width - 1 cm to 5 cm

1 _____ 2 _____ 3 _____ 4 _____